



WORLD'S MOST EFFICIENT & POWERFUL ENVIRONMENTAL CONTROL SYSTEM

Comparison of DRAGON with other well known dehumidifiers.

At Knox Medical, FL there are three similar cultivation rooms, flower-1, 2 and 3, all equipped with DRAGON Climate Control units by Enerama.

For the purpose of testing, Flower-3 was equipped with additional four dehumidifiers by other manufacturer.

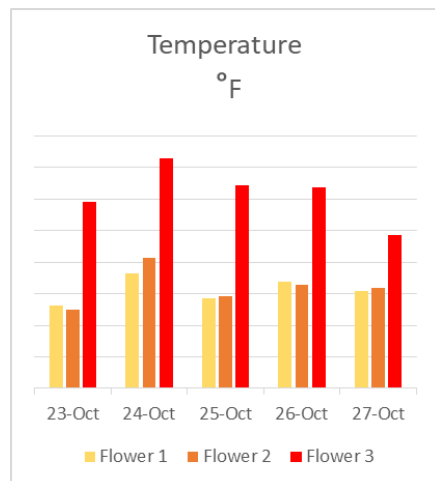
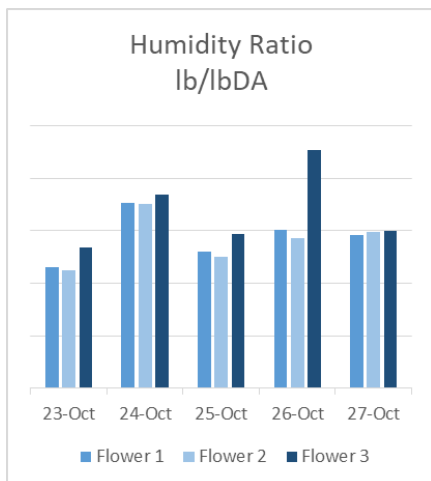
Comparing temperature and humidity readings of rooms Flower-1, 2 and 3 on October 2018, there has been a temperature increase detected in Flower-3.

In order to understand the possible cause of this increase in temperature, DRAGON units were paused in that zone on the night of October 25/26. The following temperature readings were taken at 05:02 AM for five consecutive nights.

Further observation proved that doing so resulted in the immediate increase of humidity levels in the room while temperature levels continued to remain high.

This discovery led to the conclusion that presence of these additional dehumidifiers by other manufacturer in the room, not only failed to control humidity levels, but also resulted in the temperature increase.

		DRAGON Readings					
		23-Oct	24-Oct	25-Oct	26-Oct	27-Oct	
FLOWER 1	Temp	°C	21.20	22.70	21.50	22.30	21.90
	Temp	°F	70.16	72.86	70.70	72.14	71.42
	Relative Humidity	%	50.70	63.30	54.50	57.80	58.20
	Humidity Ratio	lb/ lbDA	0.11574	0.17659	0.13024	0.15100	0.14615
FLOWER 2	Temp	°C	21.00	23.50	21.60	22.20	22.00
	Temp	°F	69.80	74.30	70.88	71.96	71.60
	Relative Humidity	%	50.10	59.40	52.60	56.00	58.20
	Humidity Ratio	lb/ lbDA	0.11187	0.17494	0.12479	0.14319	0.14832
FLOWER 3	Temp	°C	26.20	28.30	27.00	26.90	24.60
	Temp	°F	79.16	82.94	80.60	80.42	76.28
	Relative Humidity	%	39.20	42.90	39.70	48.50	48.20
	Humidity Ratio	lb/ lbDA	0.13408	0.18407	0.14671	0.22637	0.14937



Humidity Ratio is the ratio of the mass of water vapor and the mass of dry air or it is known moisture content.